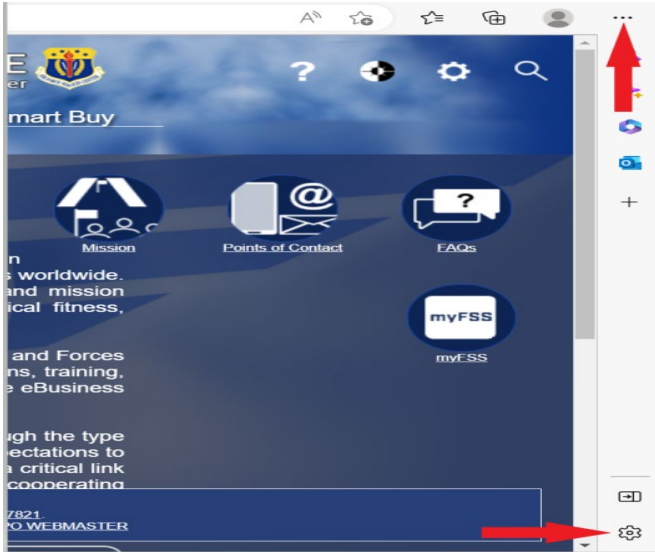
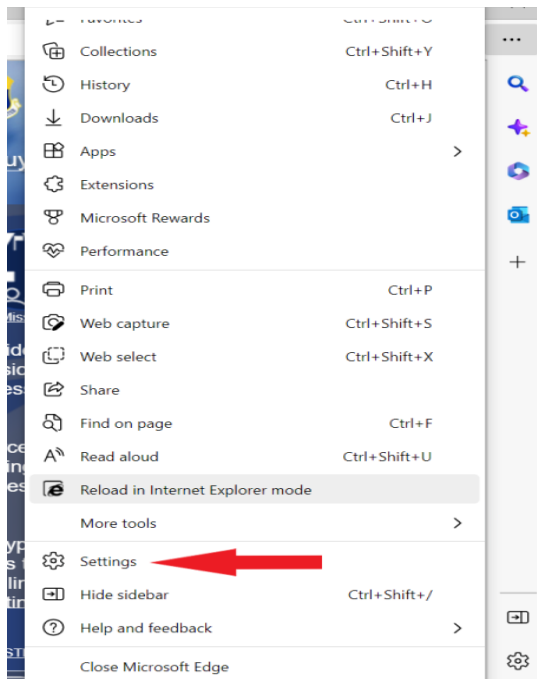


Edge Compatibility (IE) Mode in Edge

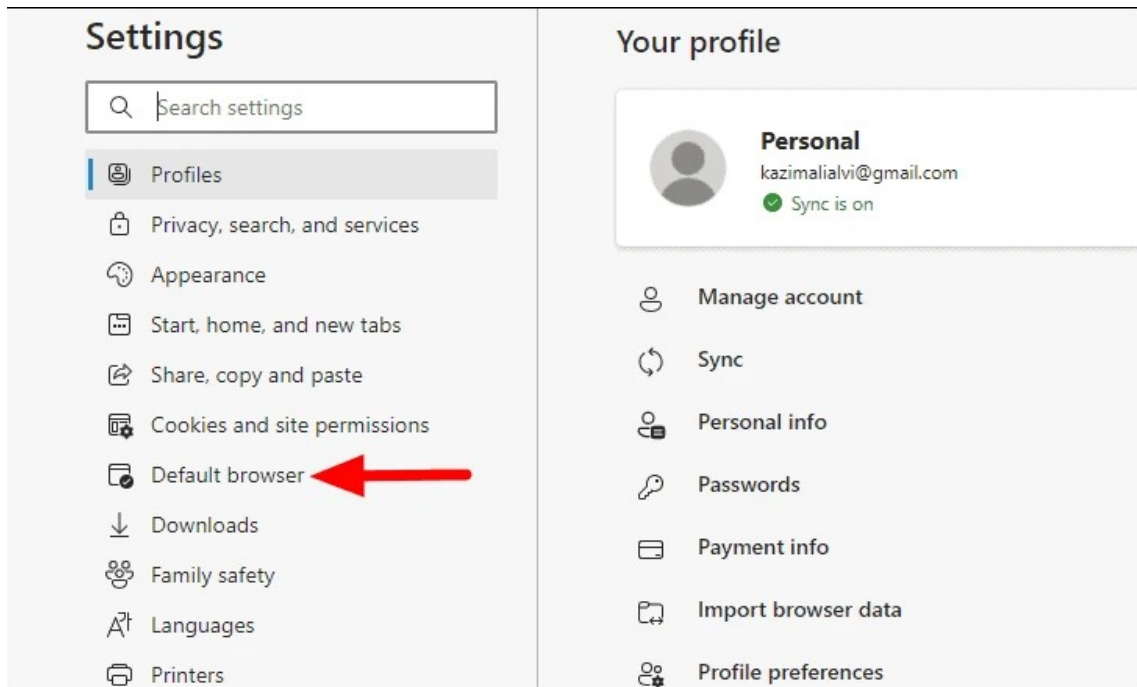
To enable Compatibility mode in Edge, click on the “Settings and more’ icon near the top-right corner to launch the menu, or the Settings icon near the bottom of the sidebar. Use Ctrl+Shft+ / in order to open/close the sidebar



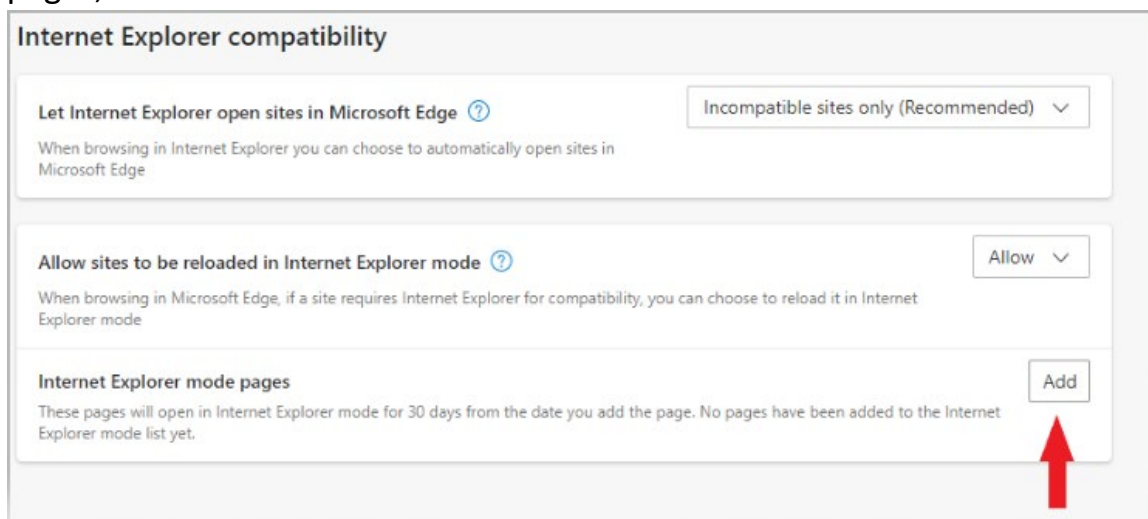
Select ‘Settings’ from the list of options in Edge menu if you selected the top-right menu option. If you used the sidebar settings, continue to the next step.



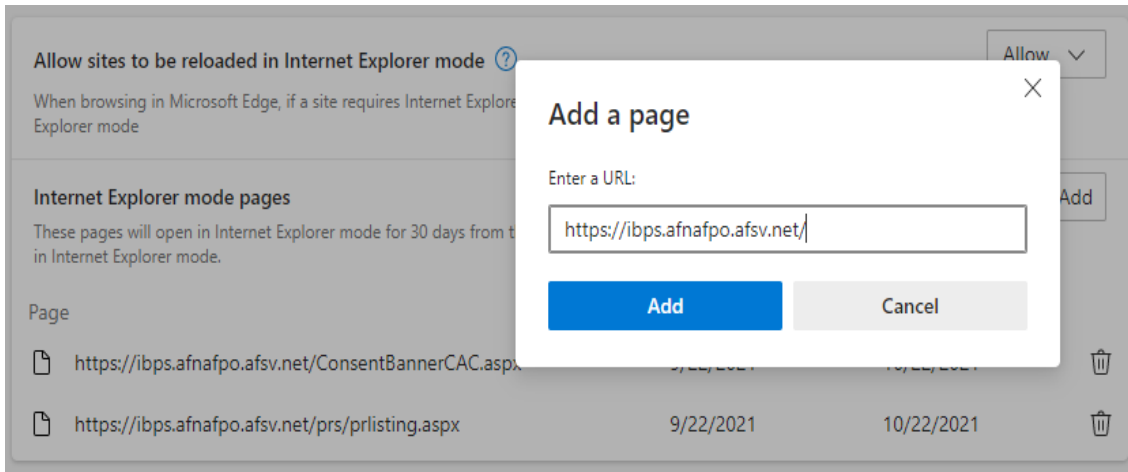
You will now find several tabs listed on the left, select 'Default browser'



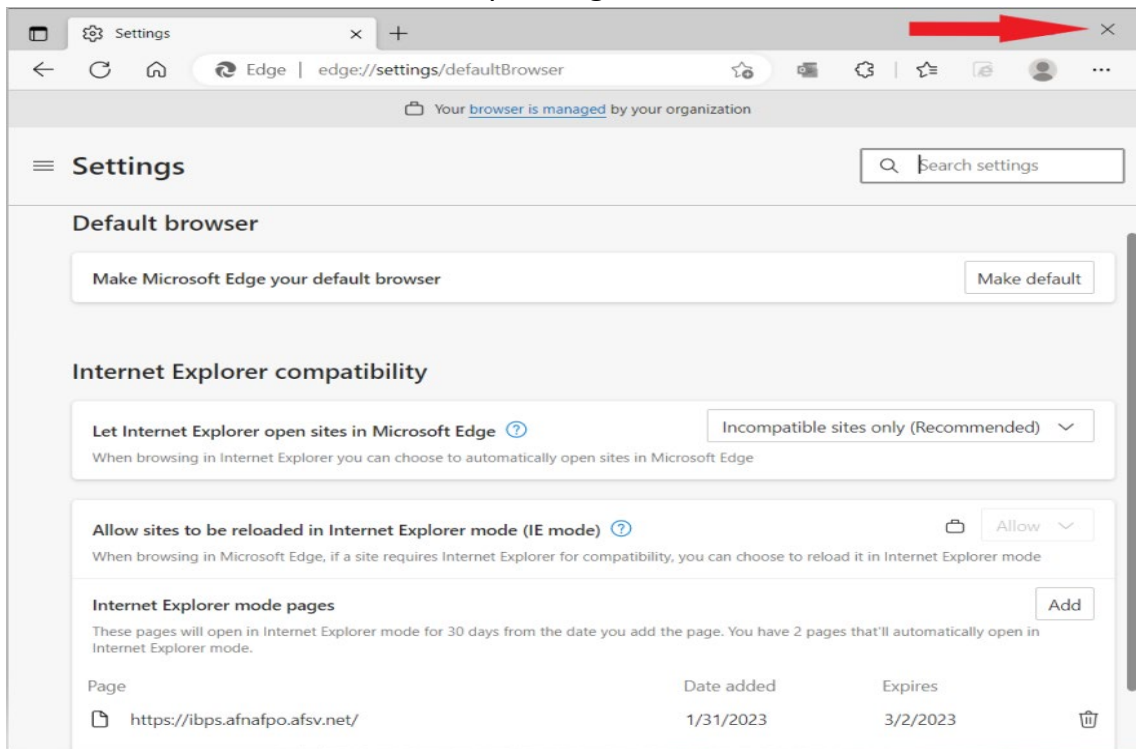
Next you will add the 'IBPS Link' into the compatibility mode approved pages, click on Add



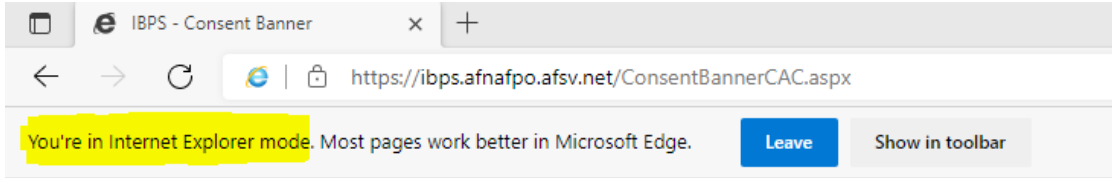
Then add the URL



You will need to close the browser for the changes you made to take effect. To do that, click the 'X' on the top far right

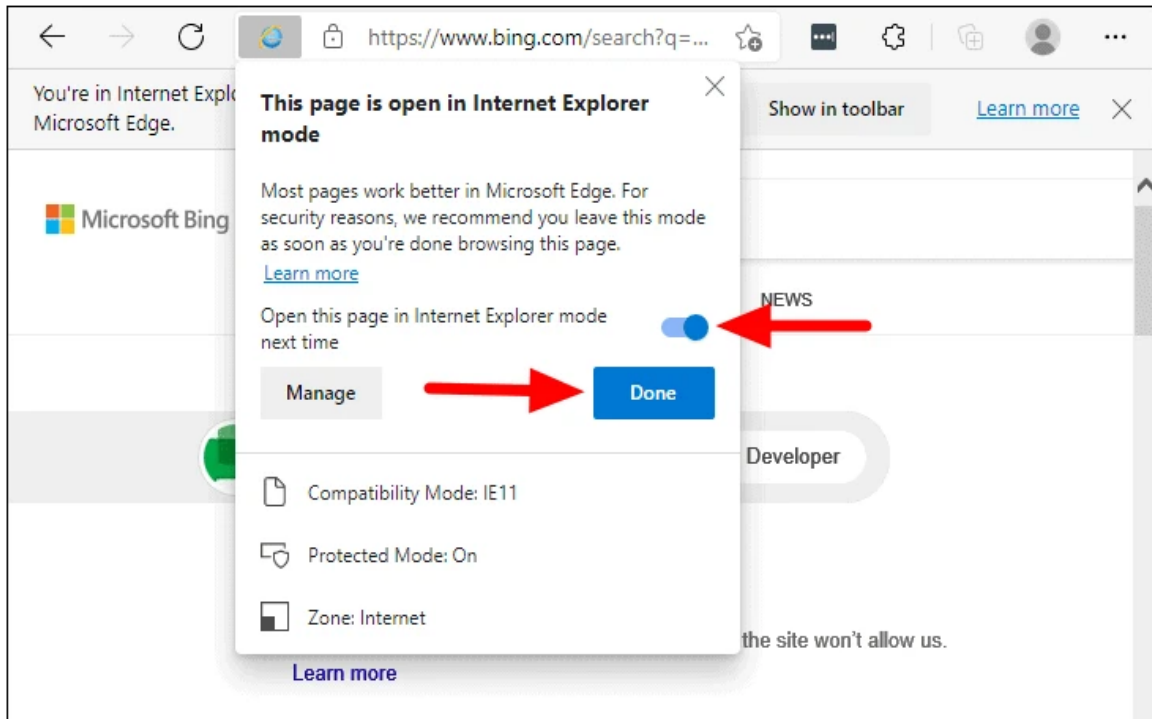


Now that you have added the 'IBPS URL' to compatibility mode. You want to verify that it's working. Open Edge like you normally do and get to the IBPS home page. You should have the message 'You're in Internet Explorer mode' at the top left



You are accessing a U.S. Government (USG) Information System (IS) that is provided for USG-authorized use only.
By using this IS (which includes any device attached to this IS), you consent to the following conditions.
The USG routinely intercepts and monitors communications on this IS for purposes including, but not limited to, penetrat
At any time, the USG may inspect and seize data stored on this IS.
Communications using, or data stored on, this IS are not private, are subject to routine monitoring, interception, and sea
This IS includes security measures (e.g., authentication and access controls) to protect USB interests—not for your persc
Notwithstanding the above, using this IS does not constitute consent to PM, LE or CI investigation searching or m
communications and work product are private and confidential. See User Agreement for details.

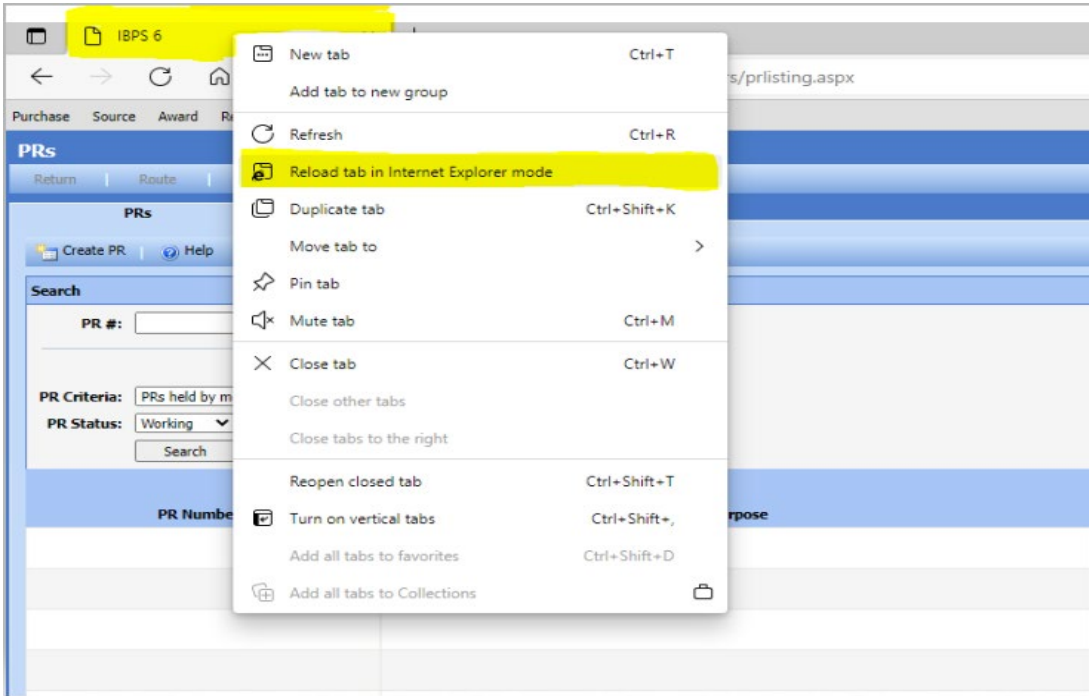
From there click on the Internet Explorer Icon and toggle the 'Open this page in Internet Explorer mode next time' button
Then click on DONE



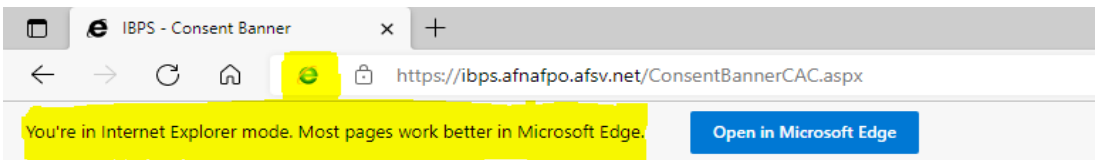
At this point you should be good to go

If still unable to get Edge in I.E mode follow the below listed steps

Log into site (example IBPS). Right Click on the (actual TAB itself) and click on (Reload this TAB in Internet Explorer Mode).



If you want to verify that it's working. You should have the message 'You're in Internet Explorer mode' at the top left as well as the (E) Icon.



You are accessing a U.S. Government (USG) Information System (IS) that is provided for USG-authorized use only.
By using this IS (which includes any device attached to this IS), you consent to the following conditions.
The USG routinely intercepts and monitors communications on this IS for purposes including, but not limited to, penetration tes
At any time, the USG may inspect and seize data stored on this IS.
Communications using, or data stored on, this IS are not private, are subject to routine monitoring, interception, and search, an
This IS includes security measures (e.g., authentication and access controls) to protect USB interests--not for your personal ber
Notwithstanding the above, using this IS does not constitute consent to PM, LE or CI investigation searching or monitori
communications and work product are private and confidential. See User Agreement for details.